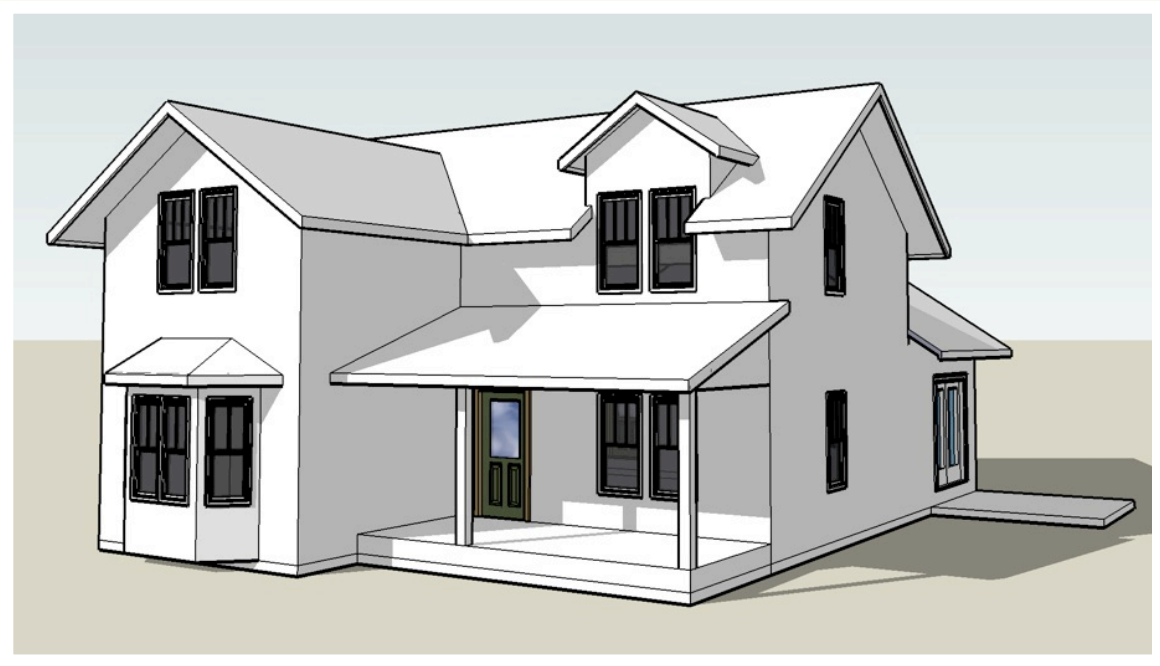


Plan 2210



This two story home is designed for living. A private master suite at the front of the home includes a five piece bath, and a huge walk in closet! A front dining room can be easily converted into a study. A large light filled great room is perfect for entertaining with the adjacent open kitchen.

Upstairs is a kids retreat with two bedrooms two bathrooms and an upstairs game room!

BLUE STONE
design group

thebluestonedesigngroup.com

Plan 2210

Old Town Series

Two Story
Main Floor Master
2,180 finished square feet

9' Basement

3-4 bedrooms

3.5 baths

Detached Garage

Opt. Alley Load Attached Garage

Design Features

Large Front Porch

Living in Place Design

All Interior Doorways 2'-10"

3'-6" Wide Hallways

Basement Construction

Energy Features

2x6 Construction

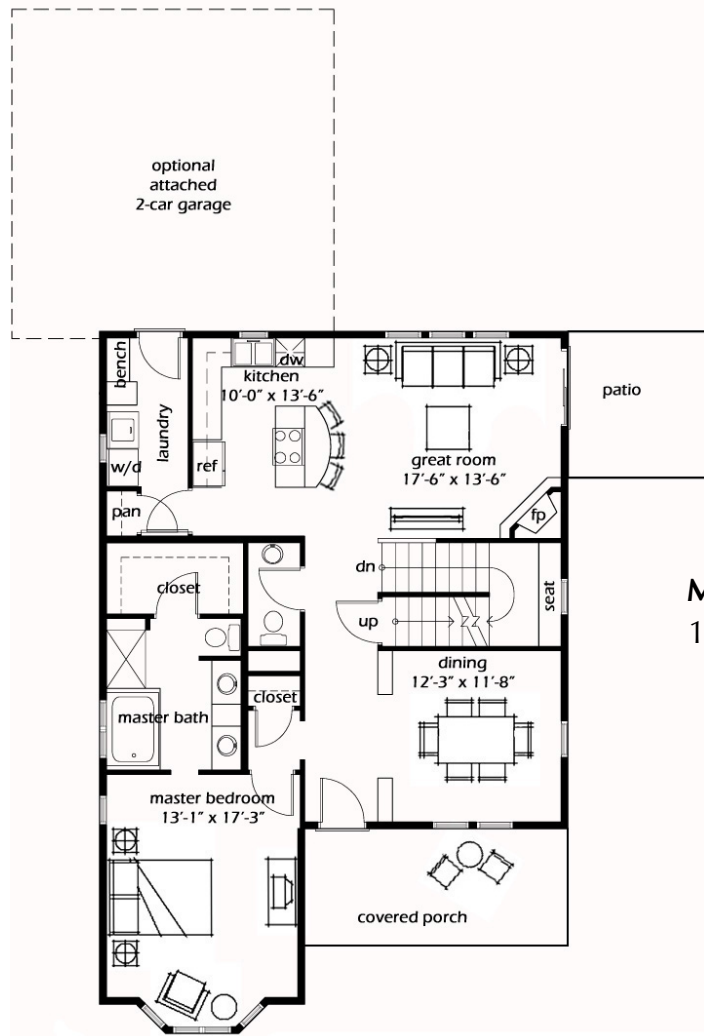
Energy Trusses

2' Overhangs

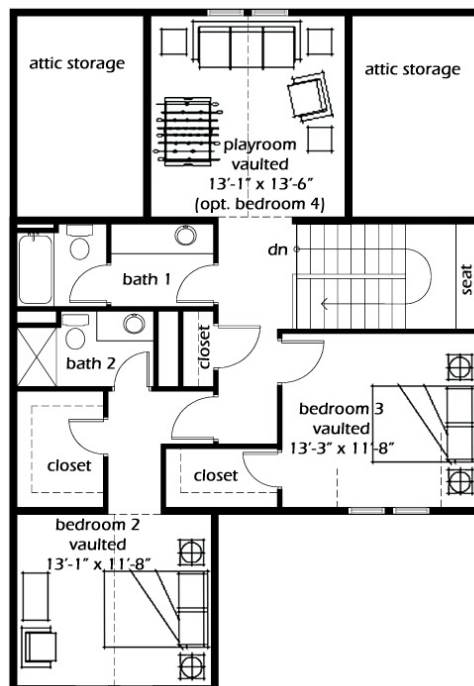
Small Footprint

90% Efficient Furnace

Attic Fan



Main Level
1,270 sq. ft.



Second Level
910 sq. ft.

Preliminary

BLUE STONE
design group

thebluestonedesigngroup.com